

ENGIE NEW VENTURES

Fund Presentation – Corporate Venture Capital



RESTRICTED



INTERNAL



SECRET



OUR PURPOSE



ENGIE's purpose is to act to accelerate the transition towards a carbon-neutral economy, through reduced energy consumption and more environmentally-friendly solutions.

The purpose brings together the company, its employees, its clients and its shareholders, and reconciles economic performance with a positive impact on people and the planet.



OUR VISION

We are convinced that an affordable and a desirable energy transition for all is within reach. We strive daily to make it a reality.

ENGIE IN 2025

More than 90,000

employees

€72bn

revenue in 2025

€8.8bn

EBIT (excluding nuclear)

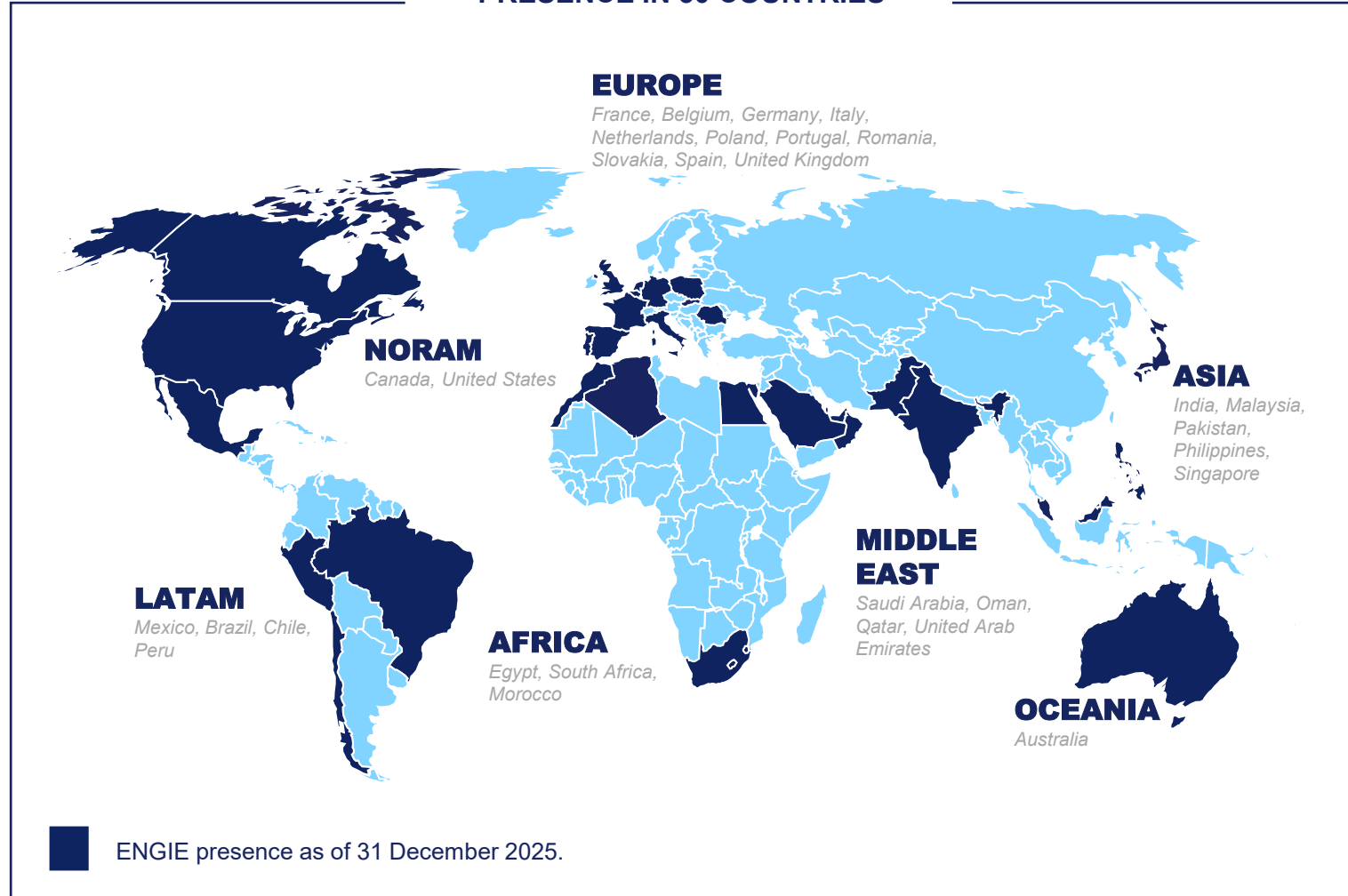
57.2 GW

Renewables and BESS capacity installed

57%

GHG emissions reduction vs 2017

PRESENCE IN 30 COUNTRIES



ENGIE Group has an integrated model for Energy Transition



Renewables & Flex Power

With its **Renewables and Flex Power GBU**, ENGIE contributes to building the energy system of tomorrow. The aim? **To decarbonize and balance the energy mix** by focusing on solar and wind in particular.

57.2 GW

Renewables and BESS capacity installed

45.5 GW

Thermal power capacity installed

AND IN THE FUTURE ?



95 GW

renewables and storage by 2030

Local Energy Infrastructure

Through its **LEI GBU**, ENGIE supports cities, local authorities, industries and service companies in **decarbonizing their energy infrastructure** by reducing consumption and shifting to more sustainable energy sources across heat, cooling, electricity and other utilities.

25.7 GW

Capacity installed

43.0 TWh

Energy delivered

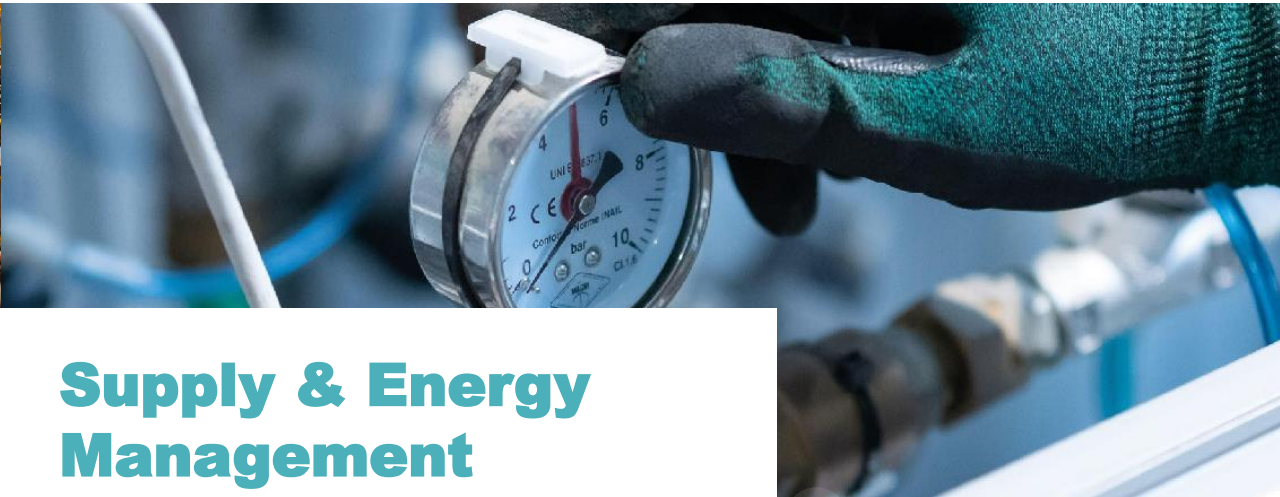
AND IN THE FUTURE ?



550

urban heating and cooling networks by 2030

ENGIE Group has an integrated model for Energy Transition



Networks

The **Networks GBU** is stepping up the **development of renewable gases, notably biomethane**, to meet climate and sovereignty challenges and to respond to the **decarbonization** needs of its customers.

14.5 TWh
Biomethane
production capacity¹

261 984
Km gas distribution

5,892
Km power
transmission

**AND IN THE
FUTURE ?**



50 TWh
of biomethane production
capacity in France by 2030

Supply & Energy Management

Through its **Supply and Energy Management GBU**, ENGIE delivers integrated energy management solutions, **combining B2B and B2C expertise** to provide reliable, optimized and increasingly **carbon-free energy supply**, while helping customers manage consumption, costs and flexibility.

232 TWh
Power delivered

+200k
B2B customers

**AND IN THE
FUTURE ?**



300 TWh
of power sales by 2030

ENGIE Group harnesses ENGIE R&I expertise to drive innovations in Energy Transition

R&I MISSION

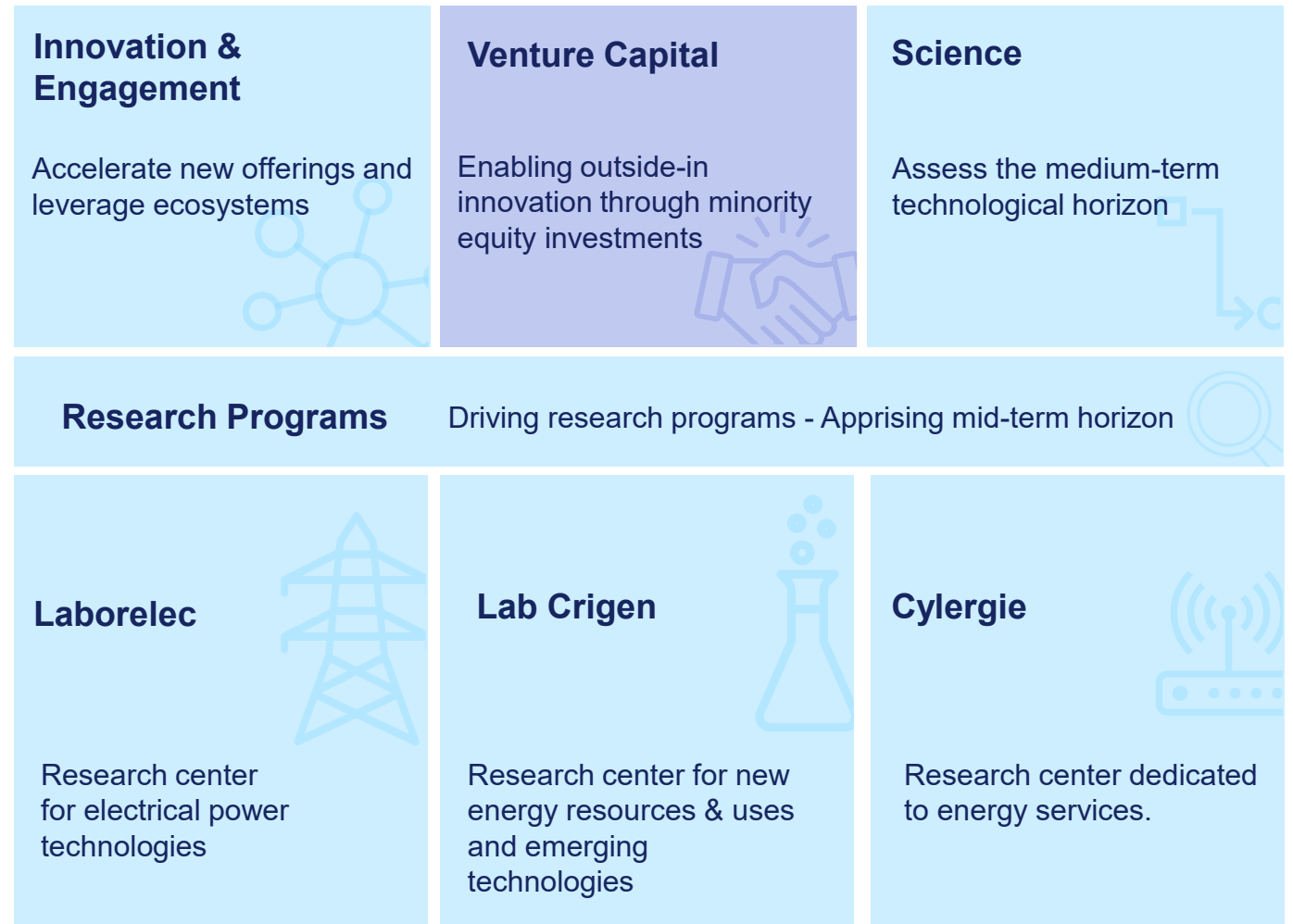
To be **transition makers.**

unlocking innovation potentials

securing new technological paths

Research & Innovation enables ENGIE to lead the energy transition towards **carbon-neutrality.**

R&I multi lever model



ENGIE New Ventures invests in breakthrough solutions to accelerate energy transition

New Ventures

RESEARCH & INNOVATION

ENGIE's venture vehicle to access **external innovation** and offer the group a priority access to **Cleantech innovative solutions**.

Investment criteria:

- **Early stage focus** - seed & series A startups;
- **Strong partnership** potential with ENGIE business units;
- **Minority investments** with a Board seat, with possibility to **Lead** and Co-lead rounds;
- **Disruptive technologies** advancing the energy transition

€1-5M
Initial ticket size

Capital deployed

+250M€

Founded in

2014

Number of active start-ups in 2025

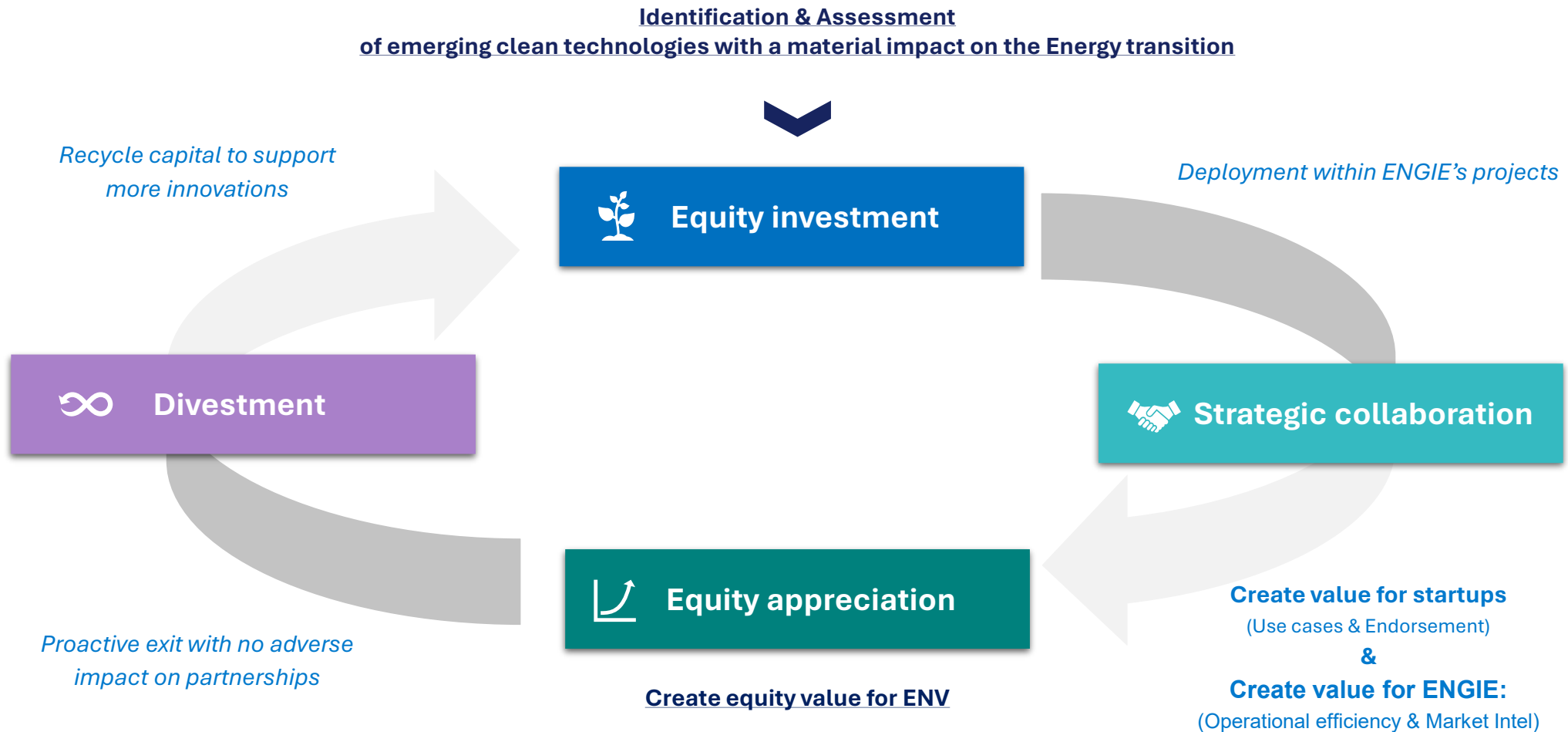


Total: 23

Number of investments

+60

ENGIE New Ventures creates value through a virtuous investment cycle



ENGIE Ventures strategic priorities

RENEWABLE & FLEX POWER



- Energy storage and hybrid systems
- AI-driven optimization
- Renewables integration
- Desalination optimization

LOCAL ENERGY INFRASTRUCTURES



- Industrial decarbonization solutions
- Building energy efficiency
- District Heating & Cooling

NETWORKS



- Bio-methane value chain optimization
- Power Grid infrastructure
- Alternative new gases

SUPPLY & ENERGY MANAGEMENT



- Carbon solutions
- Data-driven energy management and trading
- Data center solutions
- Energy management and flexibility

A team of 10 members at the service of innovation



Johann Boukhors
Fund Managing Director

EUROPE

Laurent Rambaud <i>Investment Director</i>	Vincent Pichon <i>Investment Director</i>	Carlos Chalbaud <i>Investment Director</i>	Davide Romeo Nanni <i>Finance Manager</i>	Rajat Dewan <i>Investment Analyst</i>	Shiyun Liu <i>Investment Analyst</i>	Myriam El Maswab <i>Executive Assistant</i>

NORTH AMERICA



Sheeraz Haji
(Sr. Advisor)



ISRAEL



Anne Baer
(Sr. Advisor)

OUR CURRENT PORTFOLIO OF 23 ACTIVE STARTUPS

Low Carbon Gases



Renewable



Enabling solutions



Decarbonization



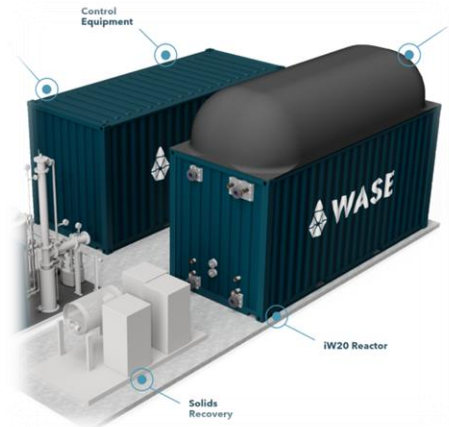
Fund of Funds



Some of our investments - Low Carbon Gases



Biogenic CO2 collection, purification & liquefaction



Electro-methanogenic technology for biogas production maximisation



Hydrothermal gasification technology for biogas production from liquid waste

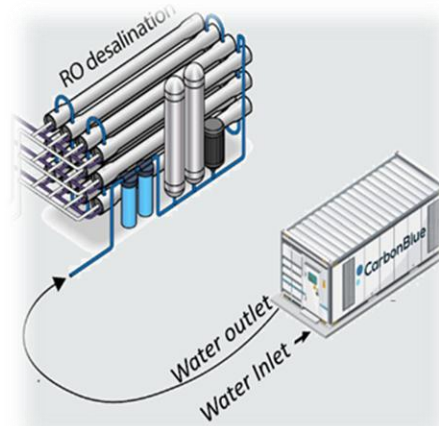


Cooling and heating solutions based on magnetic materials

Some of our investments – Decarbonization (1/2)



District heating & cooling networks powered by innovative CO2 loop technology



Desalination optimization by self-production of chemicals through CO2 capture



ALPINOV X



Water based cold production technology for district cooling networks

Some of our investments – Decarbonization (2/2)

 **Industrial**



Optimization platform to improve energy efficiency through production control

 **CONNECTED ENERGY**



Stationary Energy storage systems utilizing second-life electric vehicle batteries

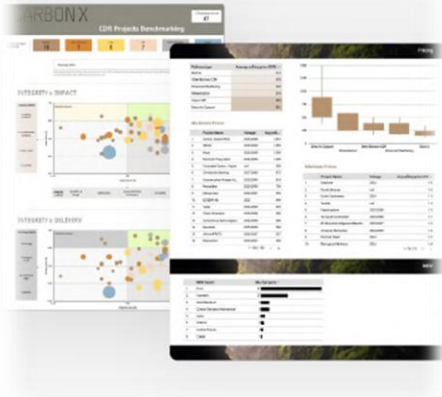
REDAPTIVE®



Efficiency-as-a-Service solution to reduce energy waste and optimize cost

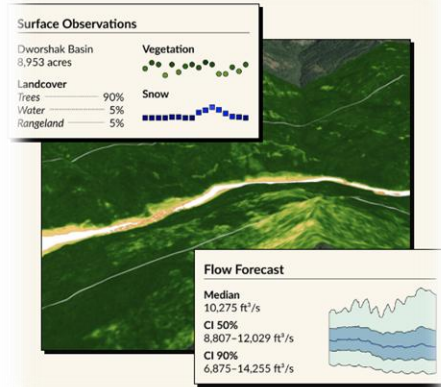
Some of our investments - Enabling solutions & Renewable

ClimeFi



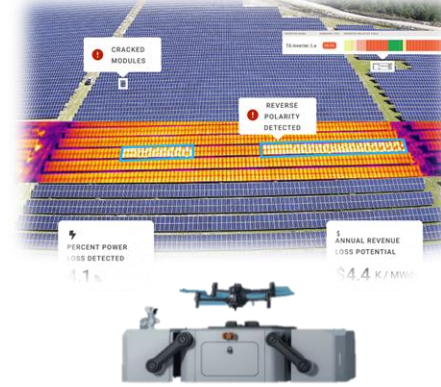
Offtake platform exclusively focusing on engineered CDR

UPSTREAM



Streamflow forecasting platform to empower decision making in water resource management

RAPTOR MAPS



Solar Analytics & productivity platform for solar PV assets

Level10 Energy



Marketplace connecting renewable energy developers and corporates

Some of our exits...

kWh analytics

Acquired by UK-based
specialty insurer

beazley

gogoro

Sale of ENV's shares on
NASDAQ



Sale of ENV shares to major
private equity investors

BLUME EQUITY
Healthy Planet Healthy People

MorganStanley

opusone
solutions

Acquired by major US-based
industrial software company



GE Digital

 STREETLIGHT

Sale of ENV's shares to major
private equity investor

 MACQUARIE

Macquarie Capital Principal Finance

 SYMBIO
A FRONT-RUNNER HYDROGEN COMPANY

Sale of ENV's shares to
French MNC tire
manufacturer



uplight

Created from **TENDRIL**

Sale of ENV shares to major
private equity investors

MorganStanley

ZOMA Capital  RUBICON
PARTNERS



[engie.com](https://www.engie.com)