

ENGIE NEW VENTURES

Fund Presentation – Corporate Venture Capital



RESTRICTED



INTERNAL



SECRET



OUR PURPOSE

“ ENGIE’s purpose is to act to accelerate the transition towards a carbon-neutral economy, through reduced energy consumption and more environmentally-friendly solutions.

The purpose brings together the company, its employees, its clients and its shareholders, and reconciles economic performance with a positive impact on people and the planet. ”

OUR VISION

We are convinced that an affordable and desirable energy transition for all is within reach. We strive daily to make it a reality.

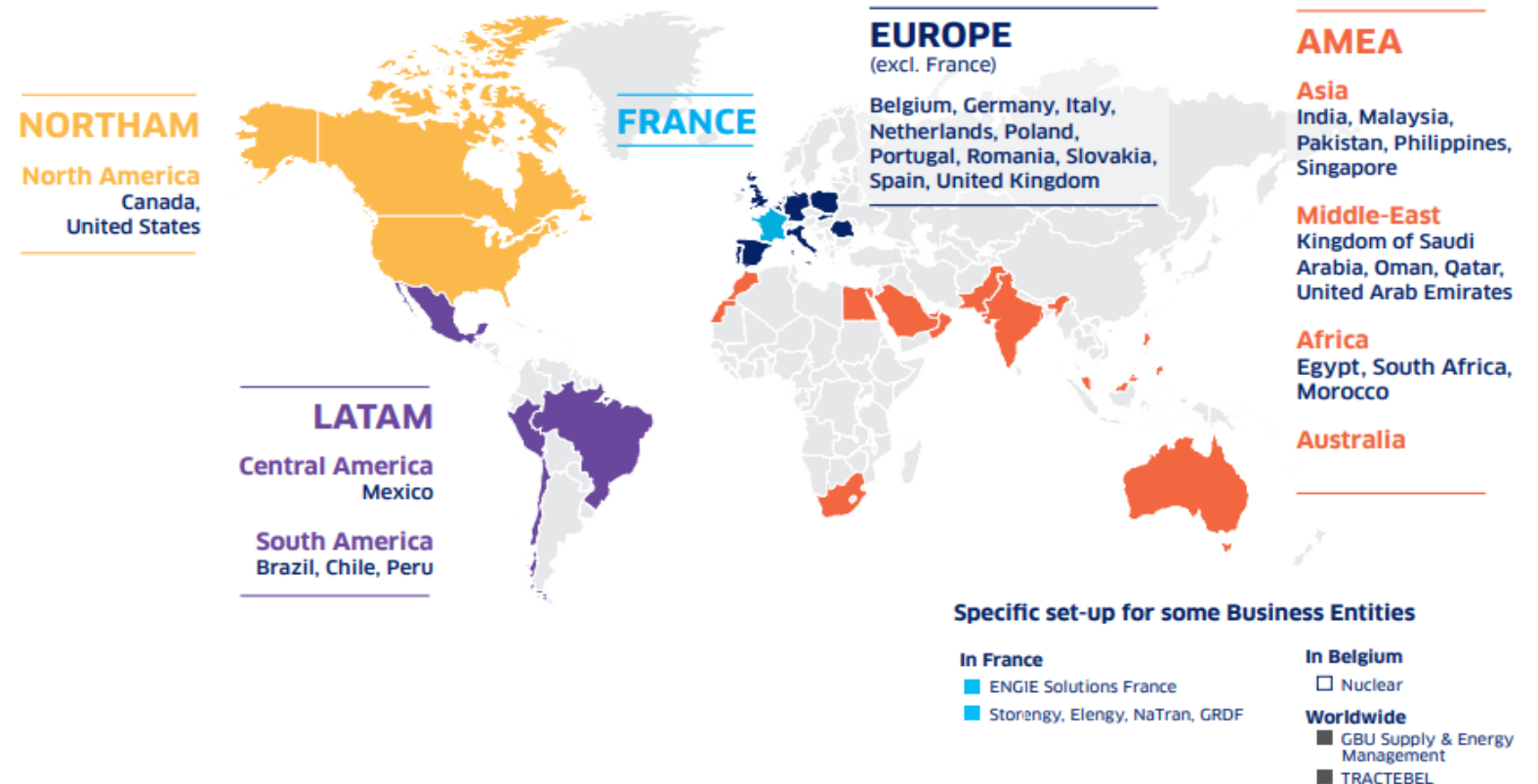
ENGIE Group operates in 30 countries

IN 2025:

- **+90,000** employees
- **€71.9 billion** revenues
- EBIT of **€8.8bn** (*excl. nuclear*)
- 6.2 GW renewables and battery capacity added in 2025
- Continued expansion in Renewables & BESS with **57.2 GW installed capacity** and nearly 8 GW under construction
- **57% reduction in GHG emissions** from energy production compared to 2017 to 45Mt in 2025

A STRONG FOOTPRINT IN FRANCE AND IN 4 REGIONS

France, Europe (excl. France), LATAM, NORTHAM, AMEA



ENGIE Group has an integrated model for Energy Transition

Distributed infrastructures to decarbonize our customers



Local energy networks



On-site energy production



Energy Performance & management

In 2025: 25.7 GW of capacity installed;
43TWh of energy delivered

By 2030: 550 urban heating and cooling networks

LOCAL ENERGY INFRASTRUCTURES

RENEWABLE & FLEX POWER

Balanced portfolio of Renewable & Flexible assets



BESS



CCGT



Solar PV



Onshore & Offshore Wind

In 2025: 57.2 GW of renewable + storage; **45.5 GW** of thermal power capacity installed

By 2030: 95 GW of renewable + storage

Energy management & bringing flexibility to the system



Energy Management



B2B



B2C

In 2025: 232 TWh of power delivered;
+200k BtoB customers

By 2030: 300 TWh of power sales

SUPPLY & ENERGY MANAGEMENT

NETWORKS

Leveraging existing infrastructures to support growth



Gas Networks



New Gases



Power networks

In 2025: 39,775 gas transmission; **261,984 km** gas distribution; **5,892 km** power transmission

By 2030: 10 TWh/year of biomethane production

ENGIE Group harnesses ENGIE R&I expertise to drive innovations in Energy Transition



Engie Research & Innovation combines research centers & Labs, incubation programs, and venture arms to detect and **accelerate deployment of new technologies** in an industrial, competitive, reliable and safe way.

Our teams **align interests and forge collaborations** between ENGIE's operating entities, external ecosystems and stakeholders around key topics **fueling the Group's future.**

ENGIE R&I Expertise: A showcase of Lab Crigen

« With our 19 benches of testing facilities, ENGIE Lab CRIGEN will be able to carry out physical and virtual tests, in order to develop, optimize, de-risk and industrialize cutting-edge low carbon technologies. »

Adeline Duterque, Managing Director ENGIE Lab CRIGEN

New Ventures

RESEARCH & INNOVATION

Corporate venture arm of ENGIE taking minority investments in clean technology startups.

Three R&D Labs

Lab Crigen

RESEARCH & INNOVATION

R&D center devoted to green gases, new energy uses in cities and buildings, industry and emerging technologies.

Laborelec

RESEARCH & INNOVATION

Research center in electrical power technology, in the fields of generation, transmission, distribution, storage and final use.

Lab Cylergie

RESEARCH & INNOVATION

Research center dedicated to energy efficiency services and energy smart management.

ENGIE New Ventures is structured to support ENGIE Group with privileged access to external innovation

Key Figures

+250M€

invested since 2014

23

Active portfolio startups

14

Countries

58

startups invested since 2014

35

o/w exits

Main Investment Criteria

Seed & Series A startups

Industrial partnerships with ENGIE

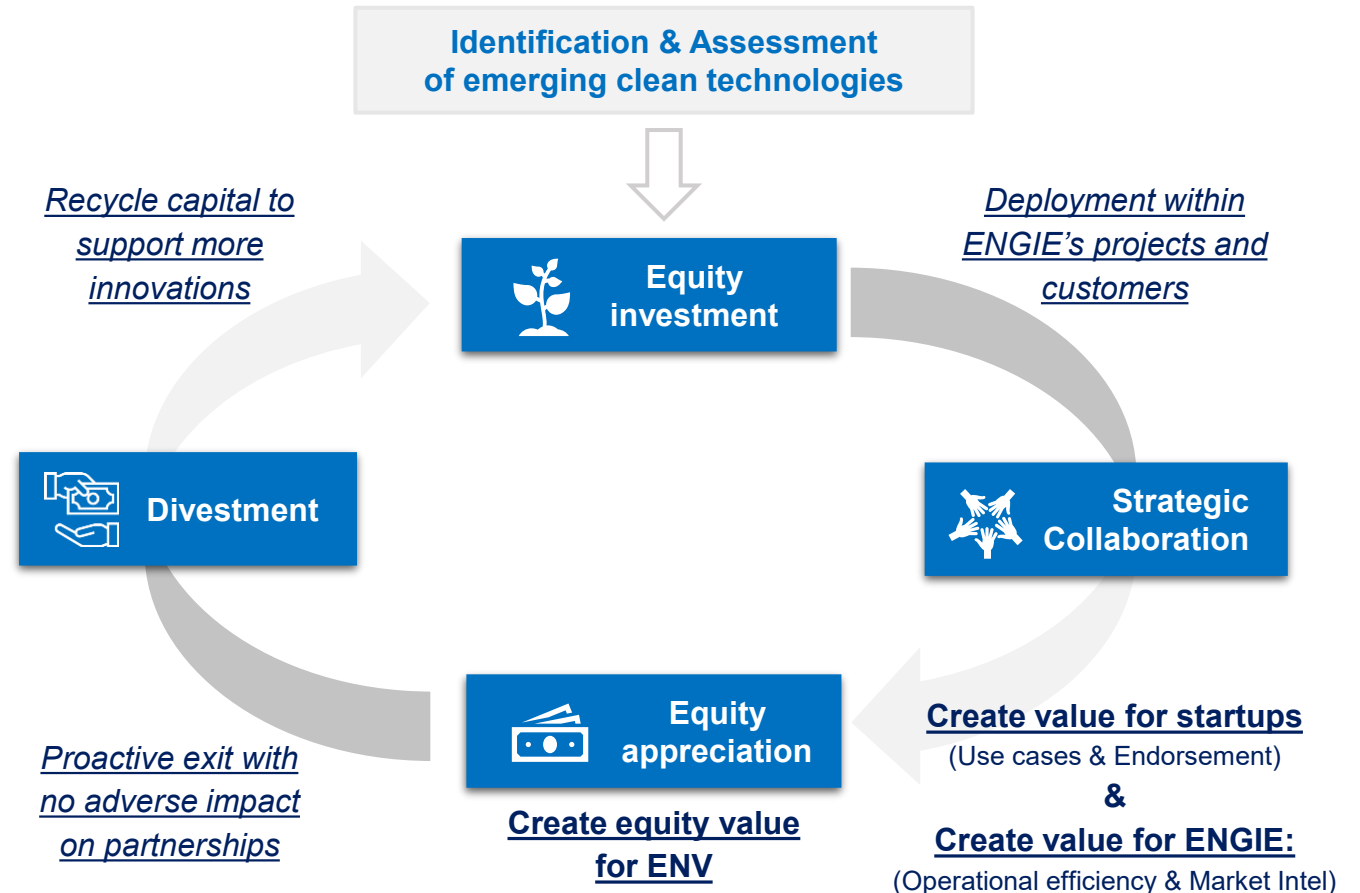
Minority Investment with a Board seat

Game-changing technologies

€1-5M

Initial ticket size

Investment Model



ENGIE Ventures strategic priorities

RENEWABLE & FLEX POWER



- Optimizing generation
- Increase flexibility
- Decarbonization of generation
- Desalination optimization

LOCAL ENERGY INFRASTRUCTURES



- Industrial and District Heating & Cooling
- Thermal storage
- Waste heat recovery

NETWORKS



- Efficiency improvement for bio-methane assets
- Power Grid optimization
- Syngas / e-methane production

SUPPLY & ENERGY MANAGEMENT



- Carbon Credits platforms
- PPA Optimization
- Energy Management & flexibility

CCUS

(CO2 management business models and technologies)

BESS Solutions

(Battery Energy Storage Systems)

A team of 10 members at the service of innovation



Johann Boukhors
Fund Managing Director

EUROPE



Laurent Rambaud
Investment Director



Vincent Pichon
Investment Director



Carlos Chalbaud
Investment Director



Davide Romeo Nanni
Finance Manager



Rajat Dewan
Investment Analyst



Shiyun Liu
Investment Analyst



Myriam El Maswab
Executive Assistant

NORTH AMERICA



Sheeraz Haji
(Sr. Advisor)



ISRAEL



Anne Baer
(Sr. Advisor)

OUR CURRENT PORTFOLIO OF 23 ACTIVE STARTUPS

Low Carbon Gases



Renewable



Enabling solutions



Decarbonization



Fund of Funds



Some of our investments - Low Carbon Gases



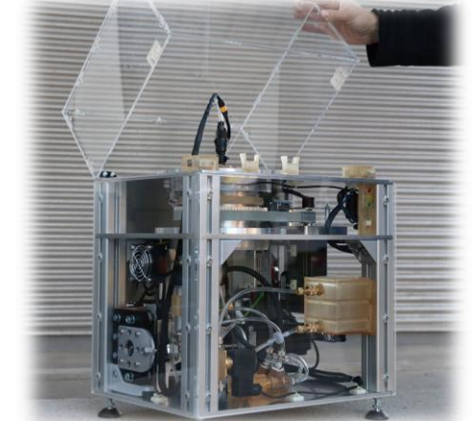
Biogenic CO2 collection, purification & liquefaction



Electro-methanogenic technology for biogas production maximisation



Hydrothermal gasification technology for biogas production from liquid waste

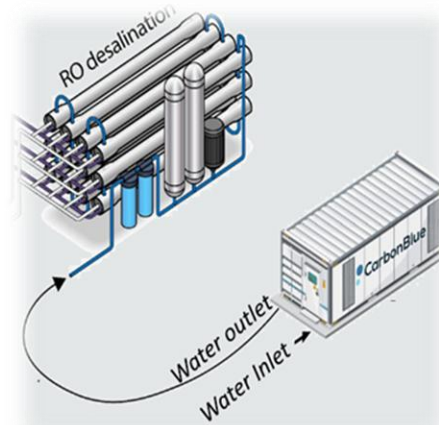


Cooling and heating solutions based on magnetic materials

Some of our investments – Decarbonization (1/2)



District heating & cooling networks powered by innovative CO2 loop technology



Desalination optimization by self-production of chemicals through CO2 capture



ALPINOV X



Water based cold production technology for district cooling networks

Some of our investments – Decarbonization (2/2)

 **Industrial**



Optimization platform to improve energy efficiency through production control

 **CONNECTED ENERGY**



Stationary Energy storage systems utilizing second-life electric vehicle batteries

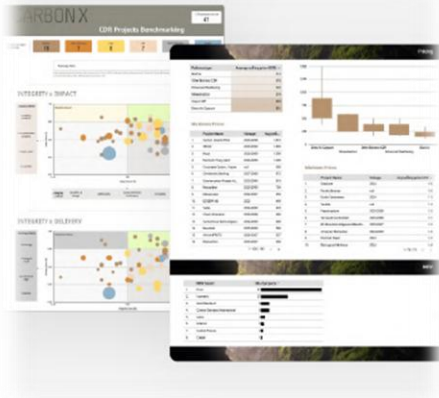
REDAPTIVE®



Efficiency-as-a-Service solution to reduce energy waste and optimize cost

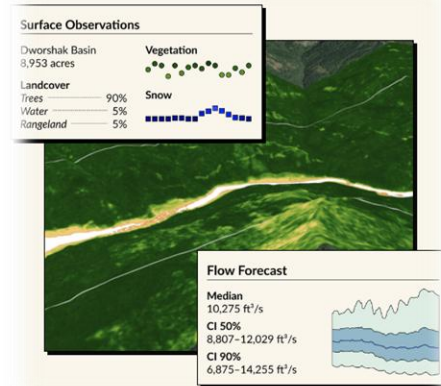
Some of our investments - Enabling solutions & Renewable

ClimeFi



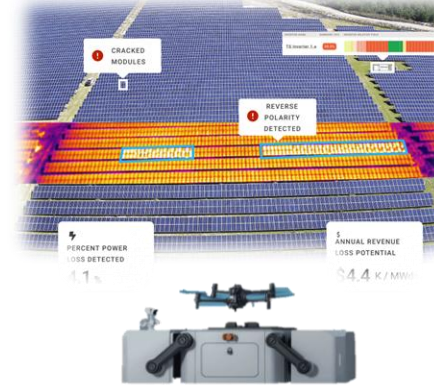
Offtake platform exclusively focusing on engineered CDR

UPSTREAM



Streamflow forecasting platform to empower decision making in water resource management

RAPTOR MAPS



Solar Analytics & productivity platform for solar PV assets

Level10 Energy



Marketplace connecting renewable energy developers and corporates



engie.com